

745



**PIONEER**<sup>®</sup>  
The future of sound and vision.

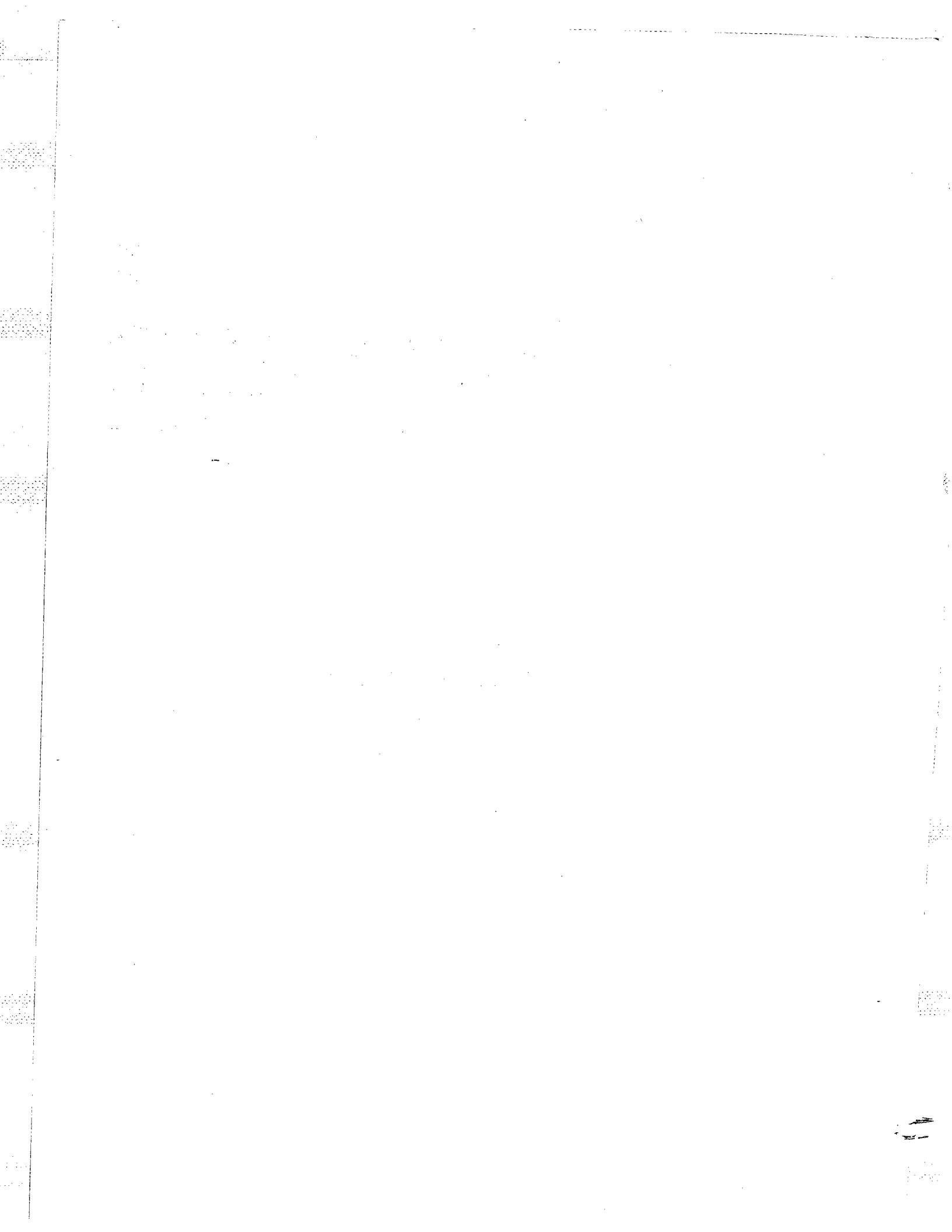
# *Service Manual*

ORDER NO.  
**ARZ2024**

AUDIO/VIDEO STEREO RECEIVER

# **VSX-9700S**

**KUC, SD**



**FRONT CONTROL A assembly (AWZ2940)**

The FRONT CONTROL A assembly (AWZ2940) is the same as the FRONT CONTROL A assembly (AWZ2513) with the exception of the following sections.

Mark	Symbol & Description	Part No.		Remarks
		AWZ2513	AWZ2940	
5818	ASG-711	.....	.....	

**VIDEO/SUR/CONTROL assembly (AWZ2942)**

The VIDEO/SUR/CONTROL assembly (AWZ2942) is the same as the VIDEO/SUR/CONTROL assembly (AWZ2511) with the exception of the following sections.

Mark	Symbol & Description	Part No.		Remarks
		AWZ2511	AWZ2942	
IC308	UPC78L05	.....	.....	
Q309	RN2201	.....	.....	
Q310	RN1201	.....	.....	
Q432	.....	.....	RN2203	
D397	.....	.....	1SS252	
D398	.....	.....	S5566	
C385	CEAS100M50	.....	.....	
C423	COMA682K50	.....	COMA562K50	
C473,C474	CCMSL680J50	.....	CKMYB181K50	
C475,C476	CCDSL221J50	.....	.....	
VR421	ACS1020	.....	.....	
R330	RD1/8PM680J	.....	RD1/8PM681J	
R397	.....	.....	RD1/8PM513J	
R421,R422	RD1/8PM513J	.....	RD1/8PM223J	
R423 - R426	RD1/8PM103J	.....	.....	
R433	RD1/8PM392J	.....	RD1/8PM822J	
R434	RD1/8PM103J	.....	RD1/8PM512J	
R440,R478	RD1/8PM183J	.....	RD1/8PM433J	
R475	RD1/8PM682J	.....	RD1/8PM912J	

**2. REMOTE CONTROL UNIT (AXD1139)**

**CONTRAST OF REMOTE CONTROL UNIT**

The REMOTE CONTROL UNIT (AXD1139) is the same as the REMOTE CONTROL UNIT (AXD1100) with the exception of the following sections.

Mark	Symbol & Description	Part No.		Remarks
		AXD1100	AXD1139	
	Name plate	AZA1190	AZA1248	
	Rubber sheet	AZA1192	AZA1247	

**Contrast of miscellaneous parts**

**Contrast of electrical parts**

Mark	Symbol & Description	Part No.		Remarks
		AXD1100	AXD1139	
IC01 (Micro computer)	PD5108-A	.....	PD5140	

Note : The circuit of the remote control unit (AXD1100) with built-in microcomputer has been changed according to the preceding table to model (AXD1139).  
The key functions of the new remote control unit have been changed according to the following table.

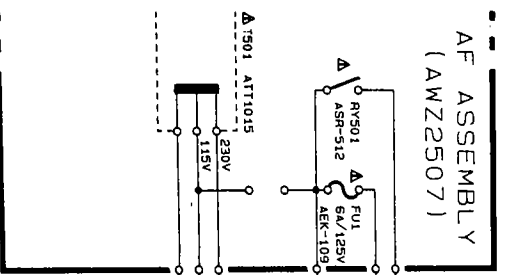
Mark	Switch No.	Key function name		Remarks
		AXD1100	AXD1139	
S-5		VCR CH+	VCR CH+/TAP SELECT	
S-13		▶◀ CH/FR-TM	▶◀ CH/FR-TM	
S-14		▶◀ /SEARCH	▶◀ /SEARCH	
S-11		DISC SEL/ DISPLAY CALL	DISC SEL/ DISPLAY CALL	
S-15		PROG	PROG	
S-36		1*12/13*24/ CH-RETURN BAND/DUAL	BAND/CH-RETURN PROG	
S-32				

**3. SCHEMA**

**3.1 TUNER AND**

**TUNER**

**POWER SUPPLY**





3.2 VIDEO/SUR/CONTROL assembly (AWZ2942) (1/2)

2

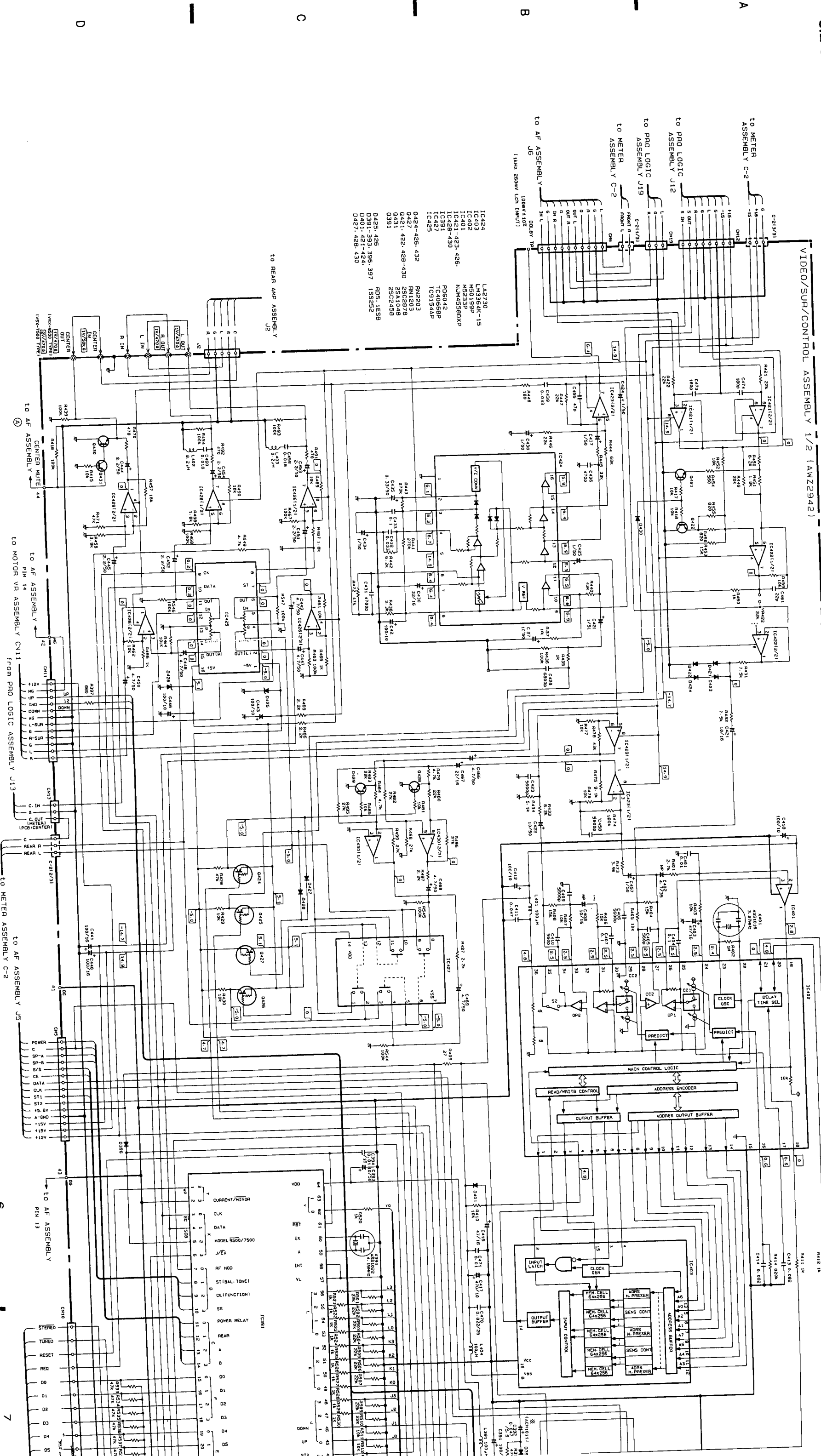
3

4

5

6

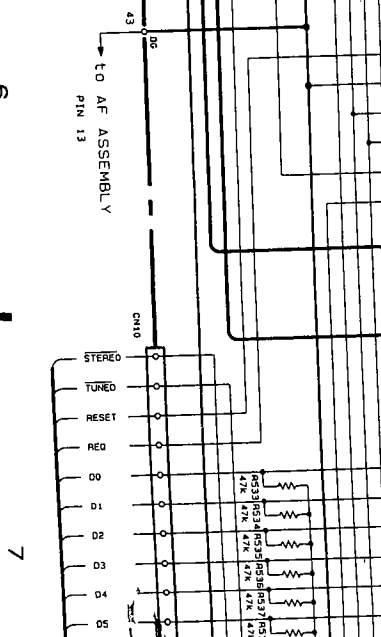
7



- IC424 LA2730
- IC403 LM358K-15
- IC402 M3233P
- IC401-423, 426, NJM45580XP
- IC428-430 P06042
- IC427 TC4056BP
- IC425 TC9154AP
- 0424-426, 432 RN2203
- 0427, 428, 429, 430 RN1203
- 0431 25C245B
- 0391 25C245B
- 0425, 426 R05-1ES8
- 0391-393, 396, 397 1S5C52
- 0401, 421, 424, 427, 428, 429, 430, 431
- 0427, 428, 430

IC391

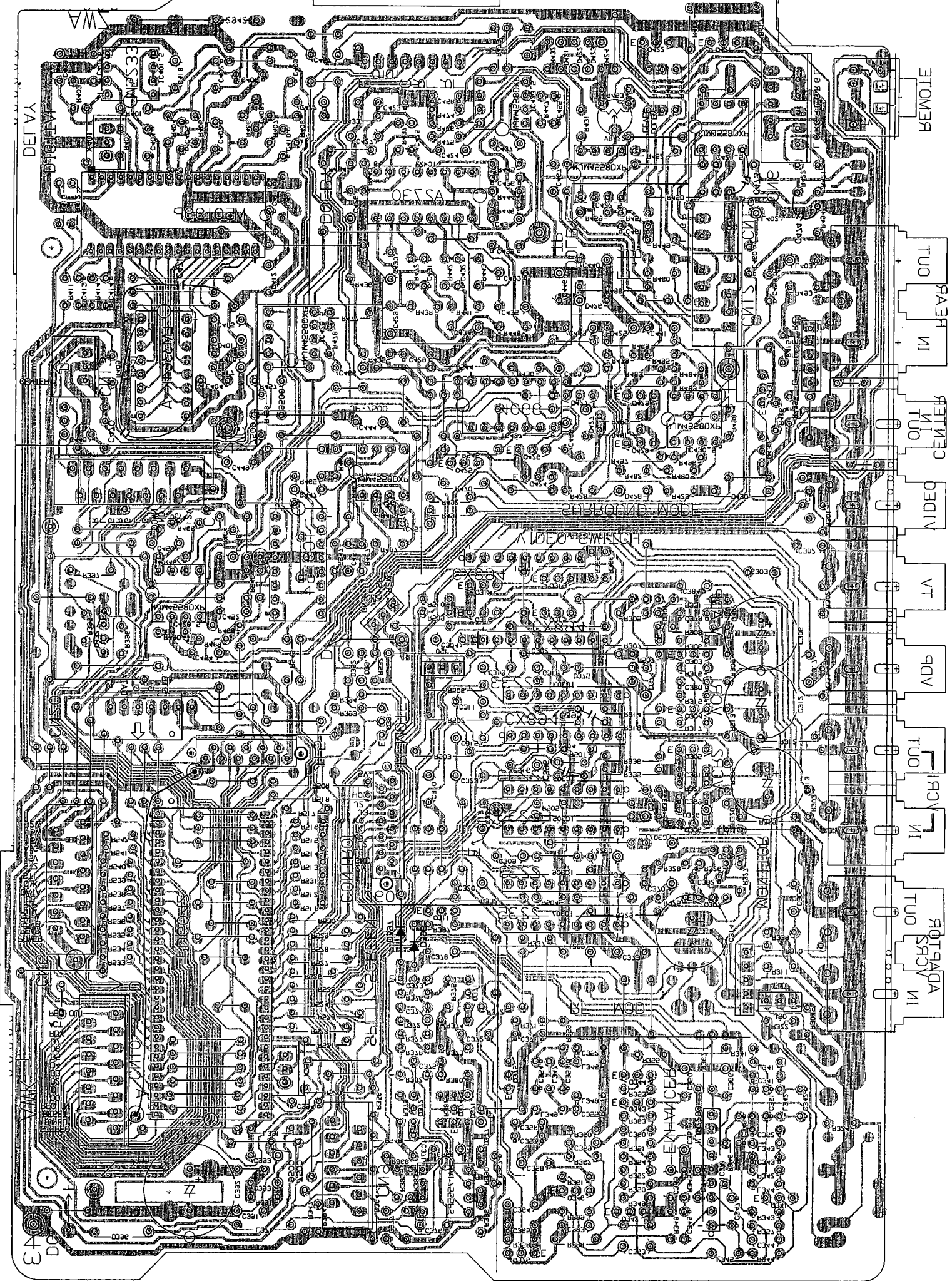
Pin	Signal
1	STB
2	EX
3	X
4	INT
5	7
6	1
7	2
8	3
9	4
10	5
11	6
12	7
13	8
14	9
15	10
16	11
17	12
18	13
19	14
20	15
21	16
22	17
23	18
24	19
25	20
26	21
27	22
28	23
29	24
30	25
31	26
32	27
33	28
34	29
35	30
36	31
37	32
38	33
39	34
40	35
41	36
42	37
43	38
44	39
45	40
46	41
47	42
48	43
49	44
50	45
51	46
52	47
53	48
54	49
55	50
56	51
57	52
58	53
59	54
60	55
61	56
62	57
63	58
64	59







(S4PSSWA) Yldmraas JORTWOC\RU2\OEDIV



NOTE:  
 This picture shows the foil side of the  
 printed circuit.

A

B

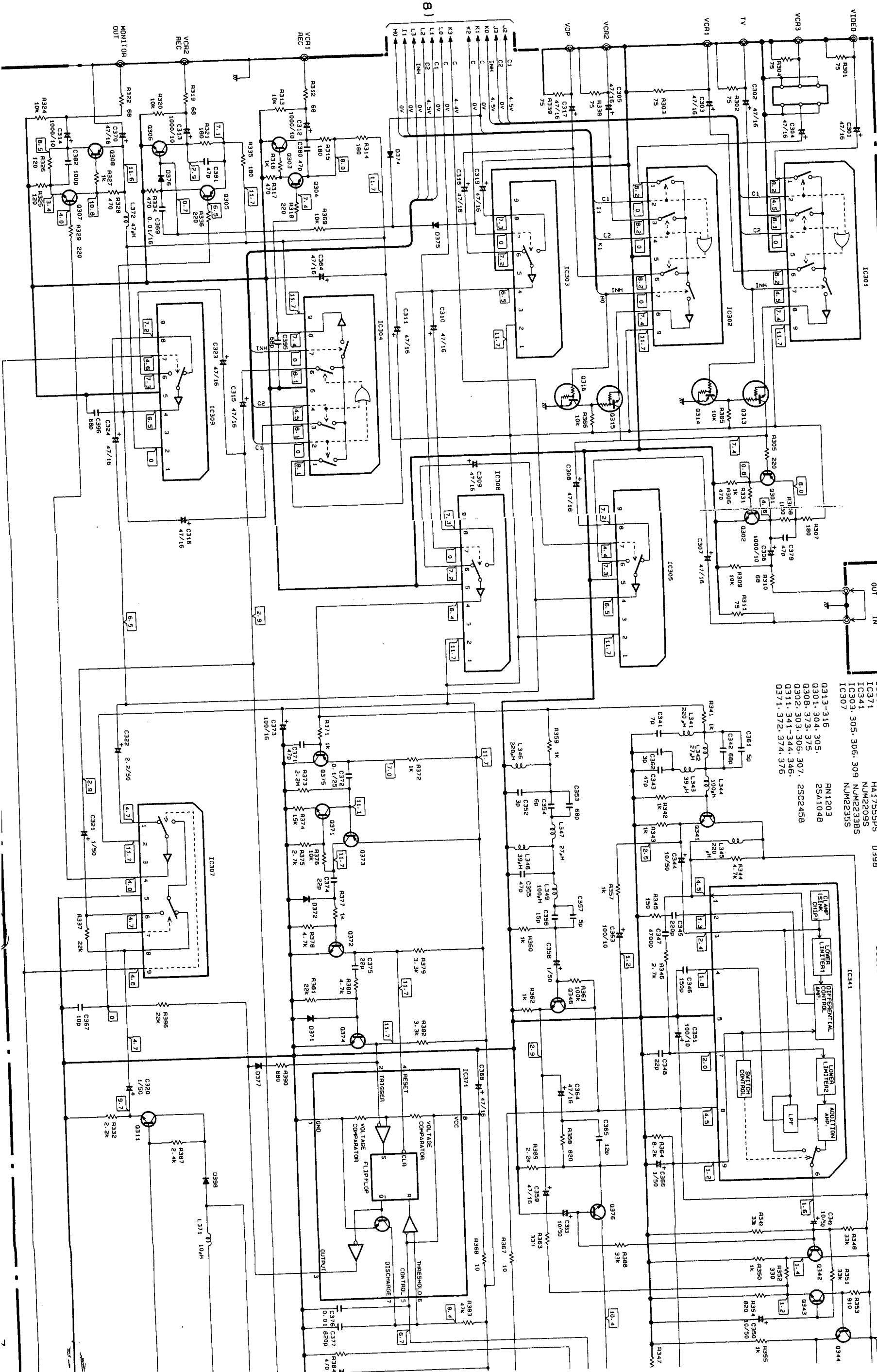
C

D



3.3 VIDEO/SUR/CONTROL assembly (AWZ2942) (2/2)

VIDEO/SUR/CONTROL ASSEMBLY 2/2 (AWZ2942)



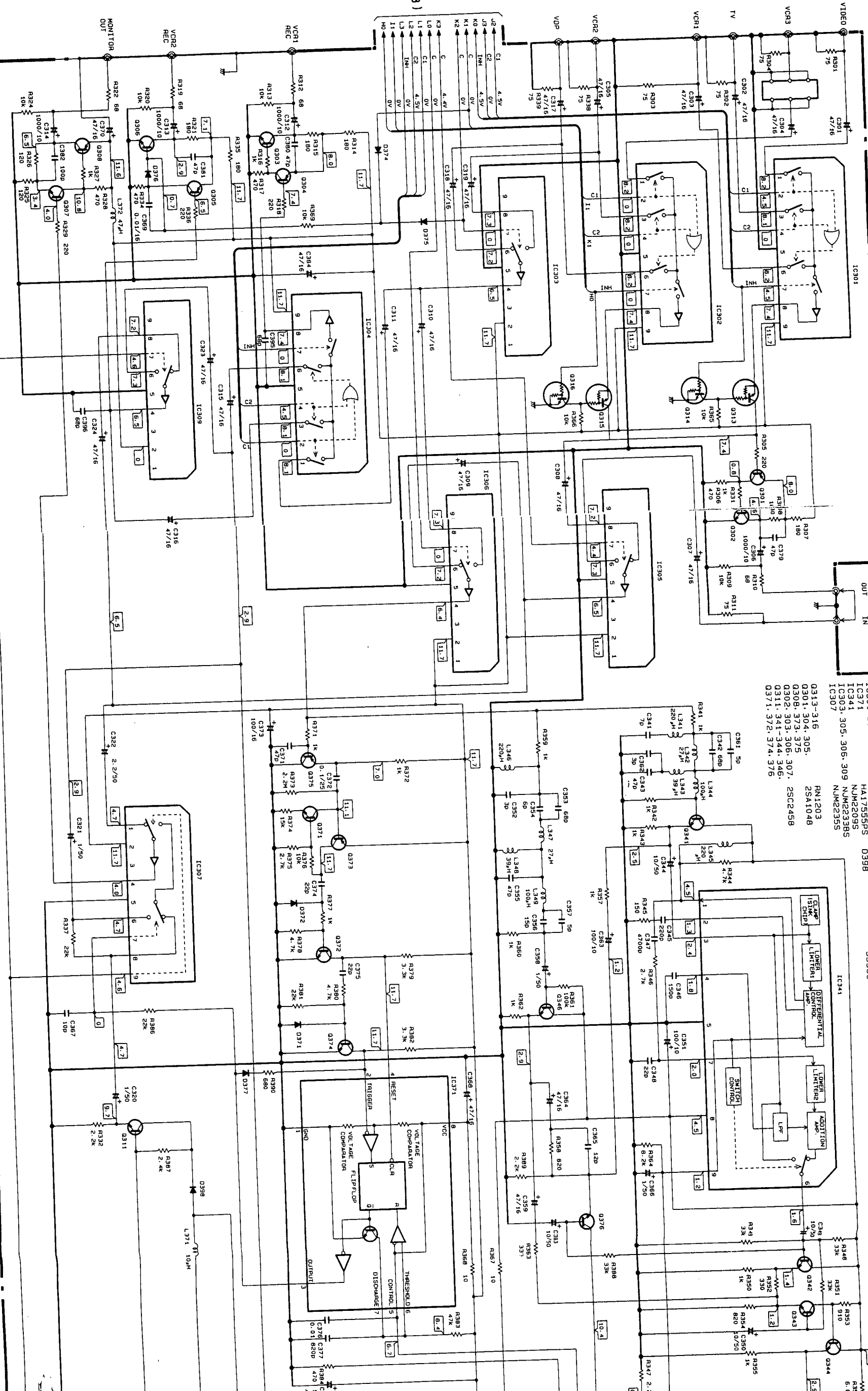
IC301-302-304	CX-894	D371-372-374-377	1SS252
IC371	HA1755SPS	D398	55566
IC341	NJM2209S		
IC303-305-306-309	NJM2238S		
IC307	NJM2235S		
IC313-316	RM1203		
IC301-304-305	2SA1048		
IC308-373-375	2SA1048		
IC302-303-306-307	2SC2458		
IC311-341-344-346			
IC371-372-374-376			

(to page 8)  
to



3.3 VIDEO/SUR/CONTROL assembly (AWZ2942) (2/2)

VIDEO/SUR/CONTROL ASSEMBLY 2/2 (AWZ2942)



- IC301-302-304 CX-894 HA1755SPS 0398
- IC307 0371-372-374-377 1SS252 S5566
- IC341 0397-305-306-309 NUM22385
- IC303-305-306-307-308-309-306-307-308-309 NUM22385
- IC304 NUM22095
- IC305 NUM22385
- IC306 NUM22385
- IC307 NUM22385
- IC308-316 2SA1048
- IC309-316 2SC2458
- IC310-316 2SC2458
- IC311-316 2SC2458
- IC312-316 2SC2458
- IC313-316 2SC2458
- IC314-316 2SC2458
- IC315-316 2SC2458
- IC316-316 2SC2458
- IC317-316 2SC2458
- IC318-316 2SC2458
- IC319-316 2SC2458
- IC320-316 2SC2458
- IC321-316 2SC2458
- IC322-316 2SC2458
- IC323-316 2SC2458
- IC324-316 2SC2458
- IC325-316 2SC2458
- IC326-316 2SC2458
- IC327-316 2SC2458
- IC328-316 2SC2458
- IC329-316 2SC2458
- IC330-316 2SC2458
- IC331-316 2SC2458
- IC332-316 2SC2458
- IC333-316 2SC2458
- IC334-316 2SC2458
- IC335-316 2SC2458
- IC336-316 2SC2458
- IC337-316 2SC2458
- IC338-316 2SC2458
- IC339-316 2SC2458
- IC340-316 2SC2458
- IC341 0397-305-306-309 NUM22385
- IC342 0397-305-306-309 NUM22385
- IC343 0397-305-306-309 NUM22385
- IC344 0397-305-306-309 NUM22385
- IC345 0397-305-306-309 NUM22385
- IC346 0397-305-306-309 NUM22385
- IC347 0397-305-306-309 NUM22385
- IC348 0397-305-306-309 NUM22385
- IC349 0397-305-306-309 NUM22385
- IC350 0397-305-306-309 NUM22385
- IC351 0397-305-306-309 NUM22385
- IC352 0397-305-306-309 NUM22385
- IC353 0397-305-306-309 NUM22385
- IC354 0397-305-306-309 NUM22385
- IC355 0397-305-306-309 NUM22385
- IC356 0397-305-306-309 NUM22385
- IC357 0397-305-306-309 NUM22385
- IC358 0397-305-306-309 NUM22385
- IC359 0397-305-306-309 NUM22385
- IC360 0397-305-306-309 NUM22385
- IC361 0397-305-306-309 NUM22385
- IC362 0397-305-306-309 NUM22385
- IC363 0397-305-306-309 NUM22385
- IC364 0397-305-306-309 NUM22385
- IC365 0397-305-306-309 NUM22385
- IC366 0397-305-306-309 NUM22385
- IC367 0397-305-306-309 NUM22385
- IC368 0397-305-306-309 NUM22385
- IC369 0397-305-306-309 NUM22385
- IC370 0397-305-306-309 NUM22385
- IC371 0397-305-306-309 NUM22385
- IC372 0397-305-306-309 NUM22385
- IC373 0397-305-306-309 NUM22385
- IC374 0397-305-306-309 NUM22385
- IC375 0397-305-306-309 NUM22385
- IC376 0397-305-306-309 NUM22385
- IC377 0397-305-306-309 NUM22385
- IC378 0397-305-306-309 NUM22385
- IC379 0397-305-306-309 NUM22385
- IC380 0397-305-306-309 NUM22385
- IC381 0397-305-306-309 NUM22385
- IC382 0397-305-306-309 NUM22385
- IC383 0397-305-306-309 NUM22385
- IC384 0397-305-306-309 NUM22385
- IC385 0397-305-306-309 NUM22385
- IC386 0397-305-306-309 NUM22385
- IC387 0397-305-306-309 NUM22385
- IC388 0397-305-306-309 NUM22385
- IC389 0397-305-306-309 NUM22385
- IC390 0397-305-306-309 NUM22385
- IC391 0397-305-306-309 NUM22385
- IC392 0397-305-306-309 NUM22385
- IC393 0397-305-306-309 NUM22385
- IC394 0397-305-306-309 NUM22385
- IC395 0397-305-306-309 NUM22385
- IC396 0397-305-306-309 NUM22385
- IC397 0397-305-306-309 NUM22385
- IC398 0397-305-306-309 NUM22385
- IC399 0397-305-306-309 NUM22385
- IC400 0397-305-306-309 NUM22385

(to page 8)  
to

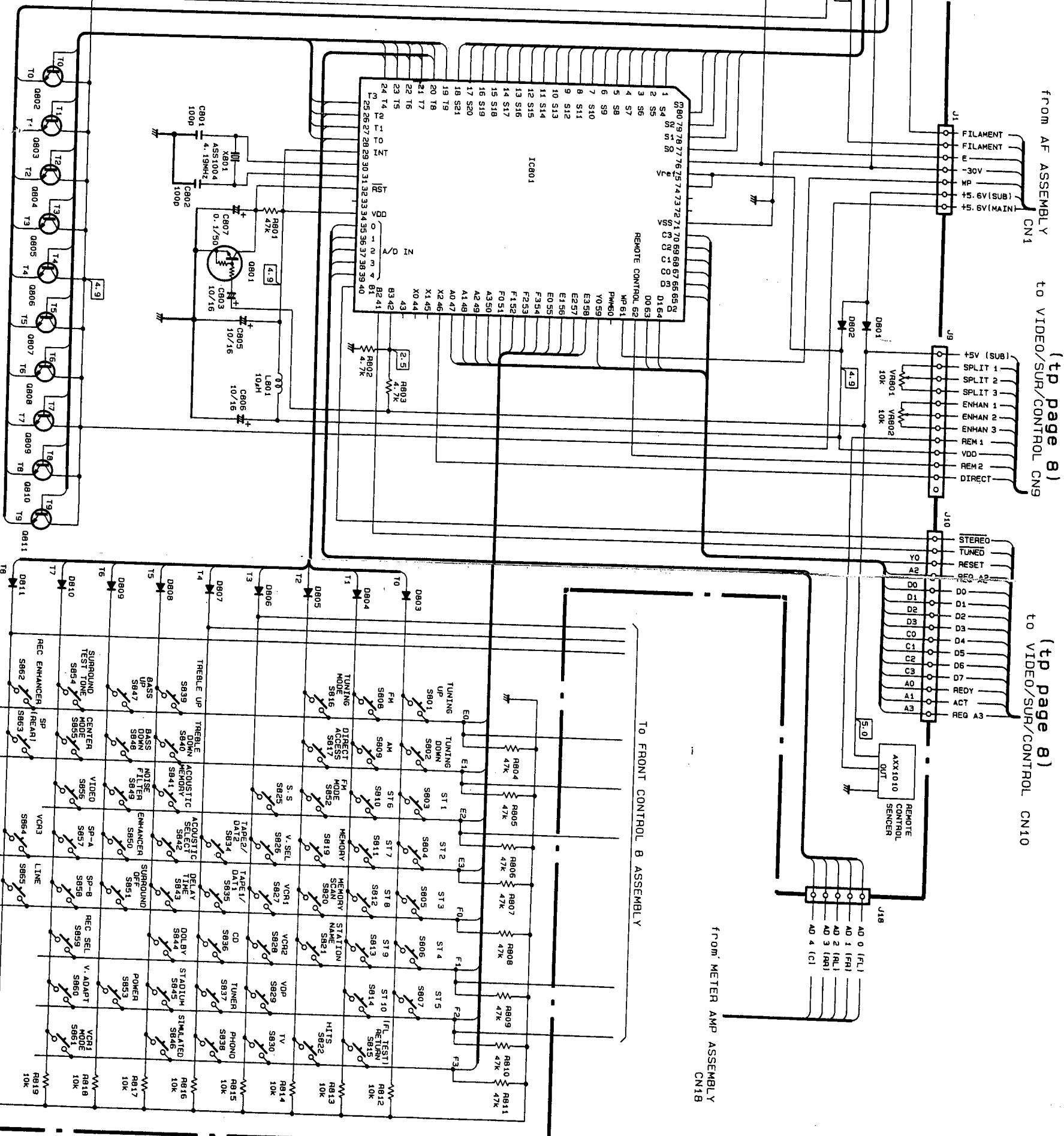
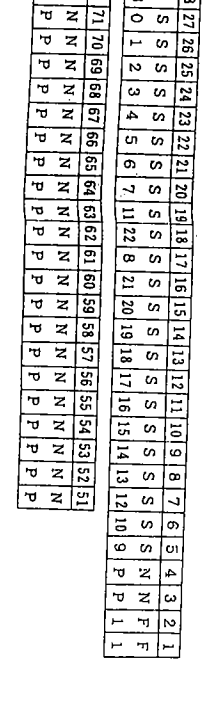
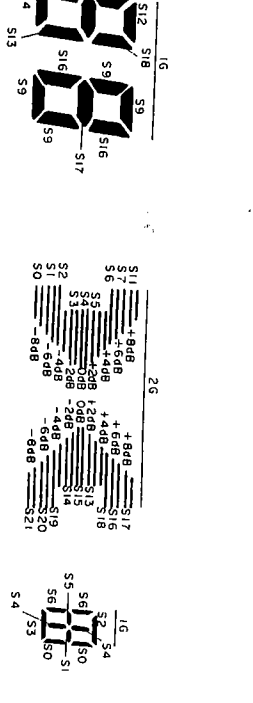
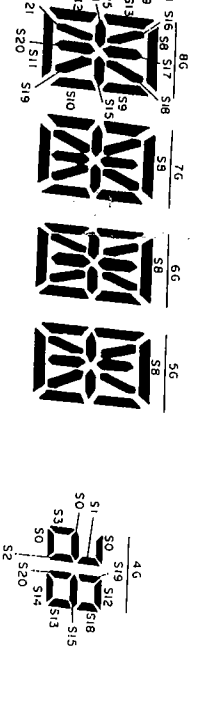
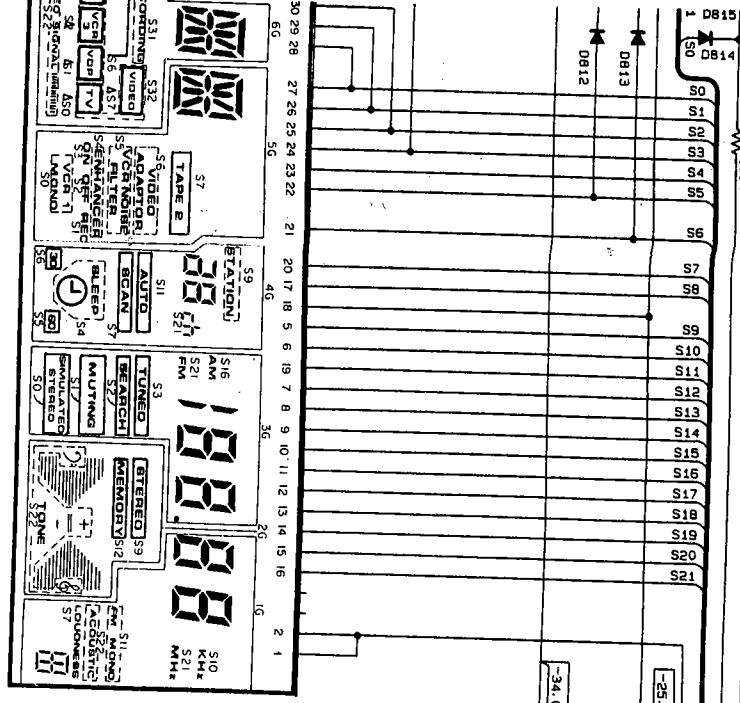
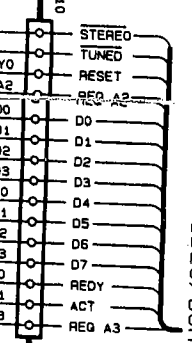
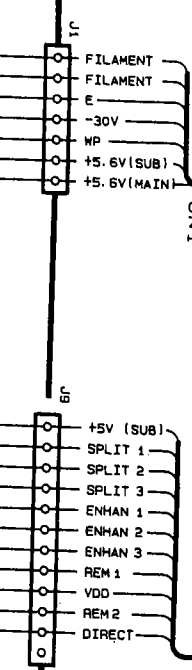
A  
B  
C  
D  
1  
2  
3  
4  
5  
6  
7





FROM AF ASSEMBLY CN1 TO VIDEO/SUR/CONTROL CN9 (tp page 8)

TO VIDEO/SUR/CONTROL CN10 (tp page 8)

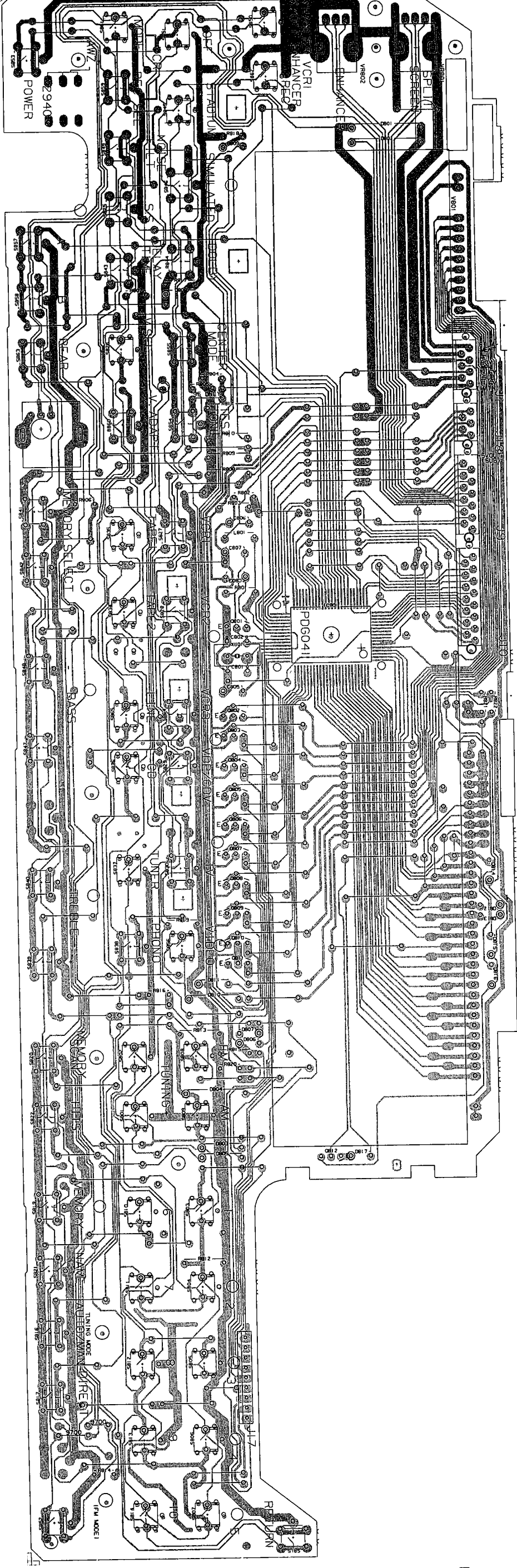


TO FRONT CONTROL B ASSEMBLY

FROM METER AMP ASSEMBLY CN18

- IC801 PDG041
- DB01-817 1SS252
- Q801 RN1203
- Q812 RN2203
- Q802-811 2SC2458
- RB20 10K

FRONT CONTROL A assembly (AWZ2940)



VR801 VR802

IC801

Q801 - Q812

NOTE  
 1. This P.C.B. connection diagram is viewed from the parts mounted side.  
 2. The parts which have been mounted on the board can be replaced with those shown with the corresponding wiring symbols listed in the following Table.

P.C.B. pattern diagram indication	Corresponding part symbol	Part Name
		Transistor
		Radiator Type transistor
		Diode
		Resistor
		Capacitor (Polarity)
		Capacitor (Non-polarity)

Others

P.C.B. pattern diagram indication	Part Name
IC	IC
S	Switch
RY	Relay
L	Coil
F	Filter
VR	Variable resistor or Semi-fixed resistor

3. The capacitor terminal marked with ⊕ (double circles) shows negative terminal.  
 4. The diode terminal marked with ⊕ (double circles) shows cathode side.  
 5. The transistor terminal to which E is affixed shows the emitter.

